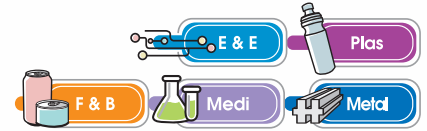




BELT CONVEYOR SERIES MMX-2



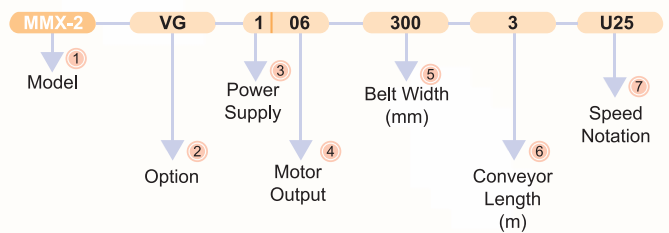
Features :

- Made up of high density anodized aluminium extrusion
- As Flat body, easy to install.
- Easy to set up with machine and equipment
- Low maintenance cost. Easy method of nut insertion
- Easy to change in layout
- Application for E&E assembly line, plastic injection moulding, food industry

SPECIFICATION TABLE

①	Model	MMX-2 Belt Conveyor	
②	Options	CF	Slanting
		VG	"V" Guide
		KE	Knife Edge
		SR	Small Roller
③	Power Supply	1:AC 110V (1ph)*, 2:AC 240V (1ph)	
④	Motor Output	04:40W 06:60W 09:90W	
⑤	Belt Width (mm)	75, 100, 150 ~ 500	
⑥	Conveyor Length (m)	0.5, 1.0, 1.5 ~ 8.0	
⑦	Speed Notation	U: Variable Speed	
	Conveyor Width (mm)	BW + 32	Drive Unit: BW + 75
	Frame Height (mm)	34 Drive Unit: 150	
	Belt Speed	Refer to Speed and Notation Table	
	Allowable Load	Refer to Details Selection Reference Table	
	Belt Type	Anti-Static Polyurethane, PVC, Food Grade Belt	

MODEL SELECTION



⑦ Speed and Notation Table

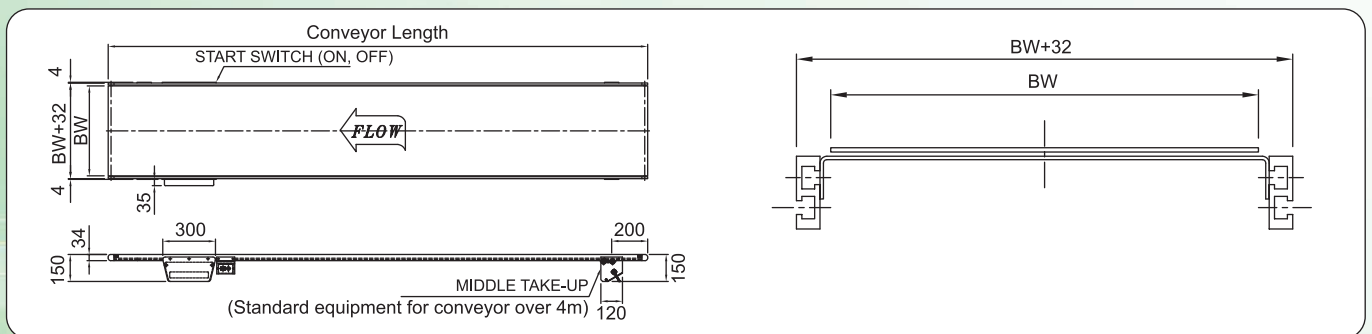
Variable Notation	Speed (m/min)
U-12.5	4.9 ~ 19.8
U-25	2.4 ~ 9.9
U-50	1.2 ~ 4.9
U-100	0.6 ~ 2.4

Note : Motor sprocket RS35 X 13T
: Drive pulley sprocket RS35 X 14T

DETAILS SELECTION REFERENCE TABLE

Load per Conveyor	Belt Width* (mm)	Conveyor Length* (m)	Speed* (m/min)	Motor Output	
1kG~10kG	75, 100~250	0.5~8.0	0.6~19.8	40W	
		300~500	0.6~19.8	40W	
			4.5~8.0	0.6~17.2	40W
11kG~20kG	75, 100~250	1.0~4.0	17.3~19.8	60W	
			0.6~14.6	40W	
			14.7~19.8	60W	
		4.5~8.0	0.6~13.3	40W	
			13.4~19.8	60W	
			0.6~13.3	40W	
		1.0~4.0	300~500	13.4~19.8	60W
				0.6~11.2	40W
				11.3~16.9	60W

MMX-2 DIMENSION DRAWING

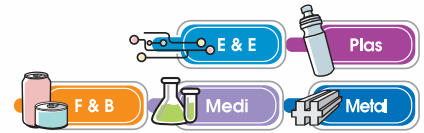


Remark : 1) Power Supply: AC110V (1 Ph) is subject to special requirement
2) Belt Width above 100mm , the width range is based on 50mm increment basis
3) Conveyor Length is based on 500mm increment basis

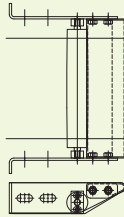
4) Belting: Selection Table is valid for 1-ply conveyor belt ONLY
5) Speed: Refer to Notation Table for the Selection of Motor Ratio



BELT CONVEYOR SERIES MMX-2

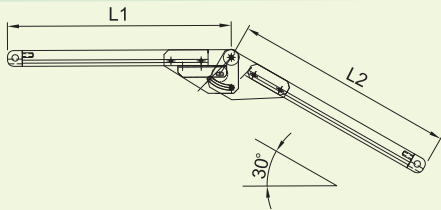


MMX-2 : DESIGN OPTION



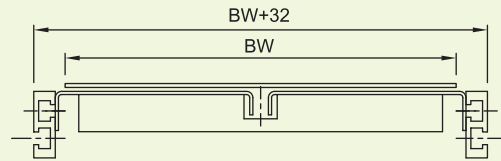
Knife Edge

Enable smaller work loads to move down the conveyor smoothly and without damage. A standard knife edge belt is used (green or white). Maximum load & speed varies according to the capacity of the conveyor.



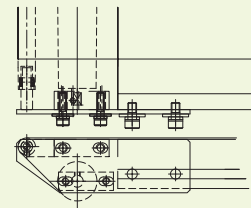
Slanting

Allow to convey material from lower to higher level. Angle of elavation can be altered from between 0 to 30 degree. Max load is 50% to the standard Load.



V-Guide

"V" cleat design prevent belt from wondering. Ideally for reversible direction requirement. Max load is 50% to the standard Load.



Small Roller

Small Rollers are used to ensure smoother conveying of item. Easy installation or removal, and it can be done by tightening the belt at the end ditch.

MMX-2 : STAND OPTION

Type of Support Leg	Model	Type S	Type H	Type AD	Type C
		40X40 Alum Profile 38X38X1.6T MS SHS	40X40 Alum Profile 38X38X1.6T MS SHS	40X40 Alum Profile + MS Bend	MS Pipe Dia 33.5
	MMX-2				

BELT SERIES : SIDE GUIDE

PG 1		AG 1		G3-Z	
-------------	--	-------------	--	-------------	--

BELT SERIES : ACCESSORY

Lamp	Hanger Rail	Manual Holder	Side Table	Shelving
60 X 30 MS	46 X 30.5 Alum Profile	19 X 26 Alum Profile	Width : 200 ≤ Plywood Widths ≤ 1200 Length : L ≤ 2400	